



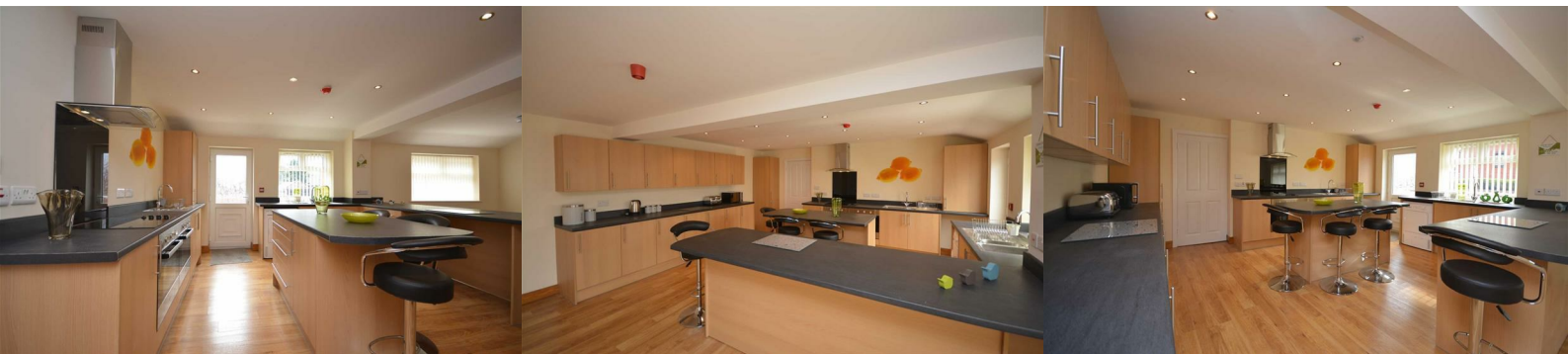
## 296 Gidlow Lane

Springfield, Wigan, WN6 7PJ

**£130 Per Week**



**\*\*\*ENSUITE BEDROOM\*\*\* \*\*MUST VIEW\*\* \*\*\*\*BILLS INCLUDED - COUNCIL TAX, GAS, ELECTRICITY, WATER, WIFI\*\*** It is with pleasure that sapphire homes are in a position to offer For Rent this large double ensuite room in a stunning HMO conversion. This 1st Floor Ensuite Bedroom is close to the heart of Wigan town centre and Wigan Infirmary. The property is Fully furnished throughout all with modern furnishing and fixtures and all bills are included in the rental figure. Beautiful large open plan communal lounge, luxury modern fitted kitchen / diner. Each bedroom has a secure lock on their door, carpeted flooring throughout, tasteful decor and excellent furnishings. Externally the property has a garden area and off road parking. This property would suit professional and early internal viewings are highly recommended to appreciate in full. No Pets. No Smokers.



## GROUND FLOOR

Entrance / Hallway

Bedroom 1

Bedroom 2

Communal Area / Lounge / Kitchen / Diner

Bedroom 3

## FIRST FLOOR

Landing

Bedroom 4

Bedroom 5

Bedroom 6

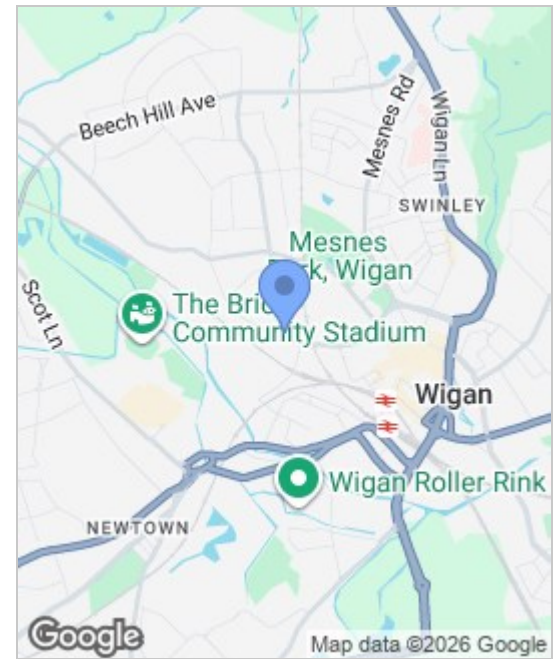
## SECOND FLOOR

Bedroom 7

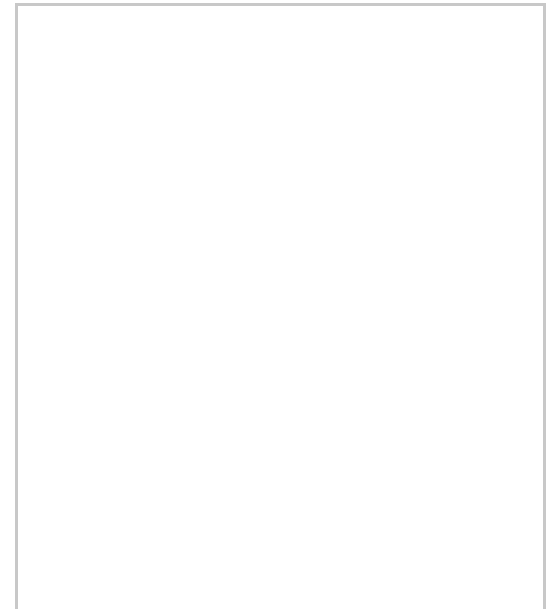
## EXTERNAL

Garden

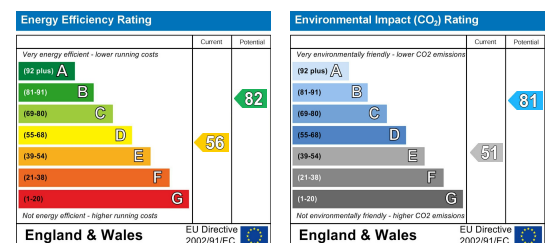
## Area Map



## Floor Plans



## Energy Efficiency Graph



These particulars, whilst believed to be accurate are set out as a general outline only for guidance and do not constitute any part of an offer or contract. Intending purchasers should not rely on the representation of fact, but must satisfy themselves by inspection or otherwise as to their accuracy. No person in this firm's employment has the authority to make or give any representation or warranty in relation to the property.

